

2J5410P

TETRA Adhesive Mount

Key Features

TETRA

- 380-470 MHz

Adhesive Mount

High Gain

Ground Plane Independent

Dimensions 60 × 112.5 × 11.3 mm

Customizable Cable and Connector



1. Antenna and electrical specifications

Parameters	380-470 MHz ISM Antenna
Standards	TETRA
Band (MHz)	390, 420, 460
Frequency (MHz)	380-470
Return Loss (dB)	~-11.5
VSWR	~2:1
Efficiency (%)	~45
Peak Gain (dBi)	~2.8
Average Gain (dB)	~-3.6
Impedance (Ohm)	50
Polarisation	Linear
Radiation Pattern	Omni-Directional
Max. Input Power (W)	50
Connector Type	SMA-Male Standard (Other Connectors Available)
Cable Length	300 cm Standard (Any Cable Length Available)
Cable Type	RG58 Standard (Other Cables Available)

Antenna Measurement Conditions:

Mounted on 30 x 30 cm Plastic Plate

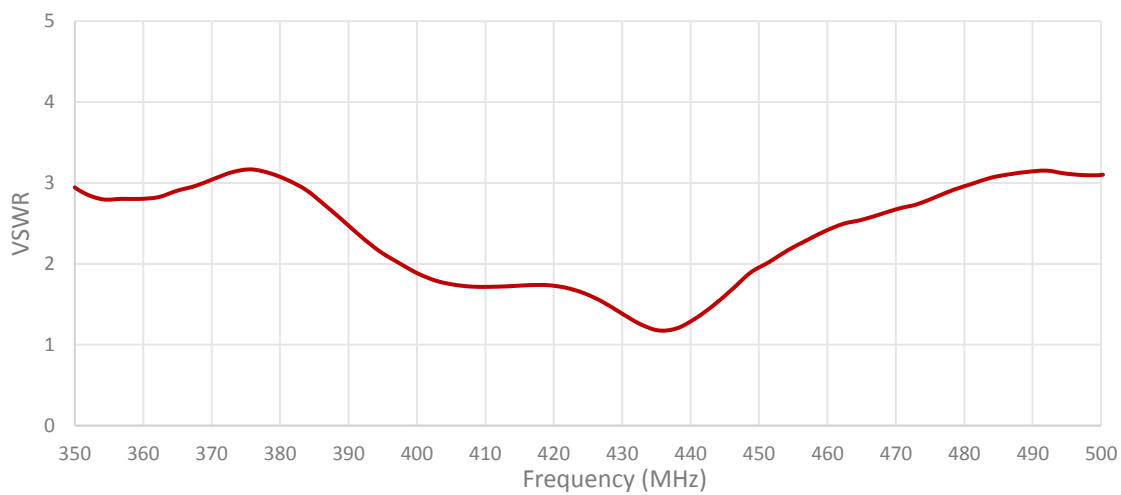
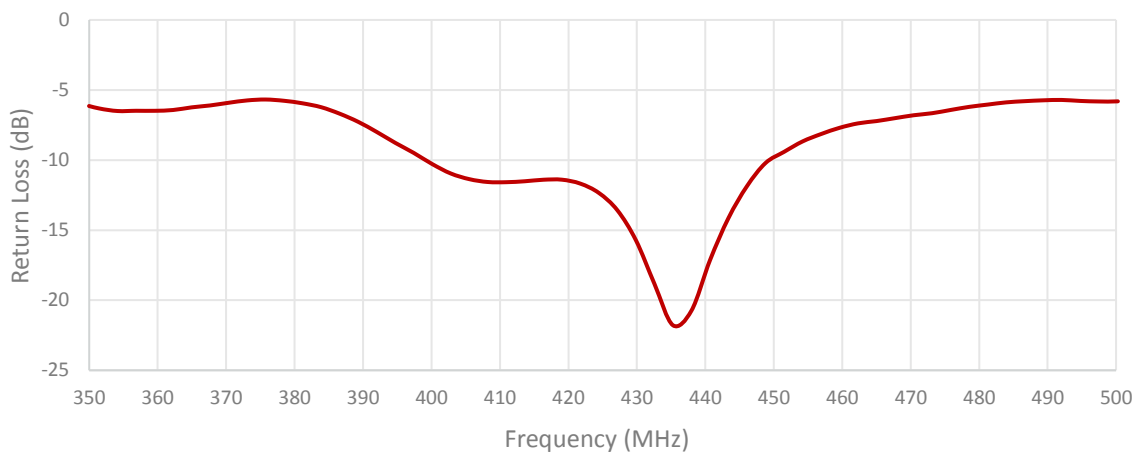
200cm of RG58 Cable

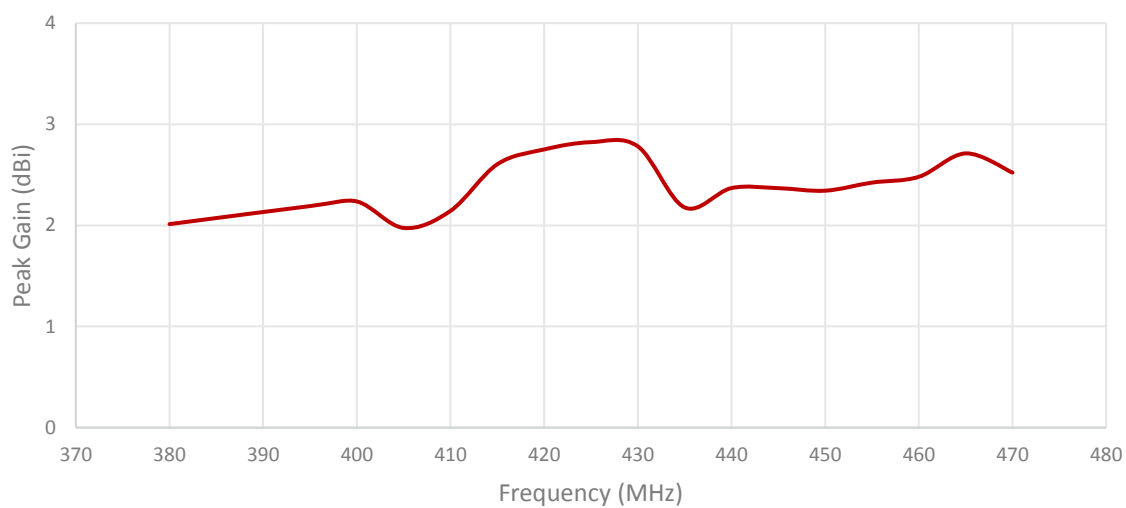
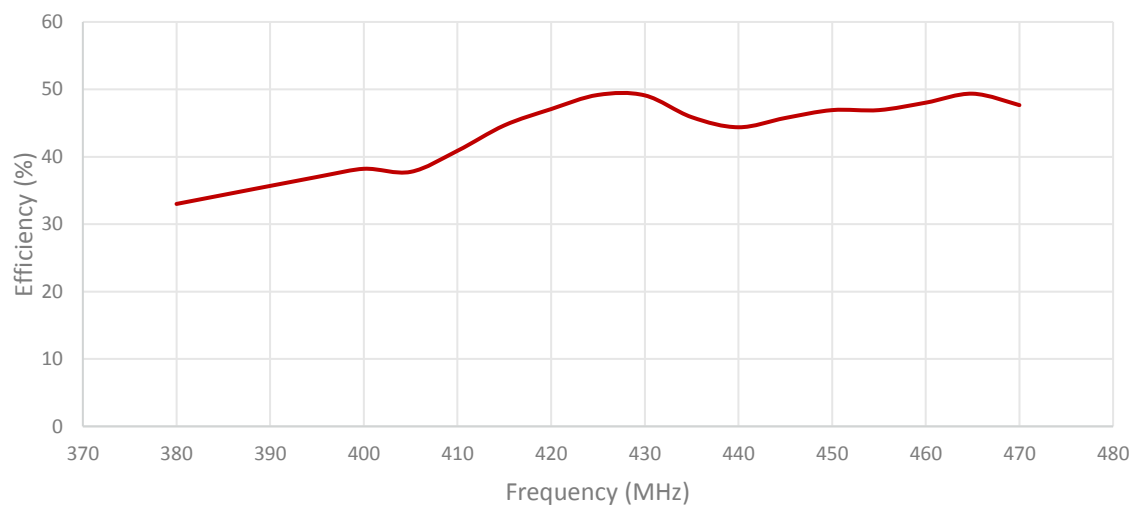
Measured in Certified CTIA 3D Anechoic Chamber

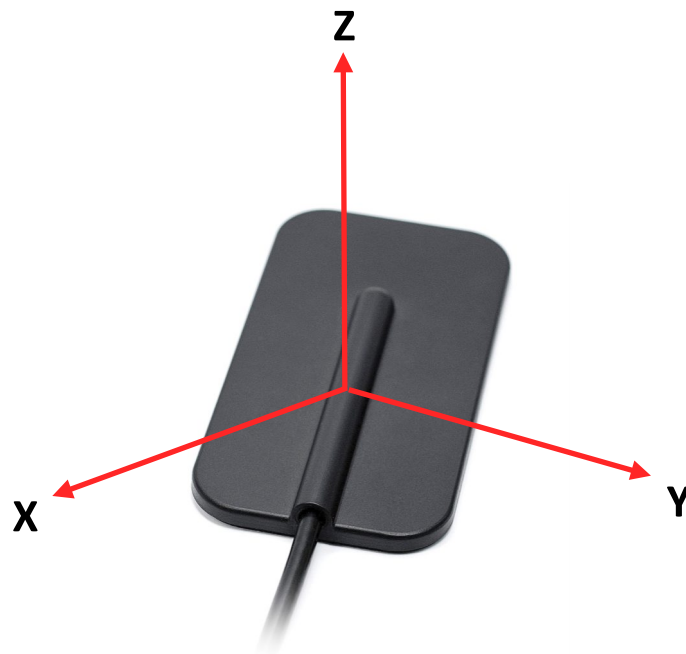
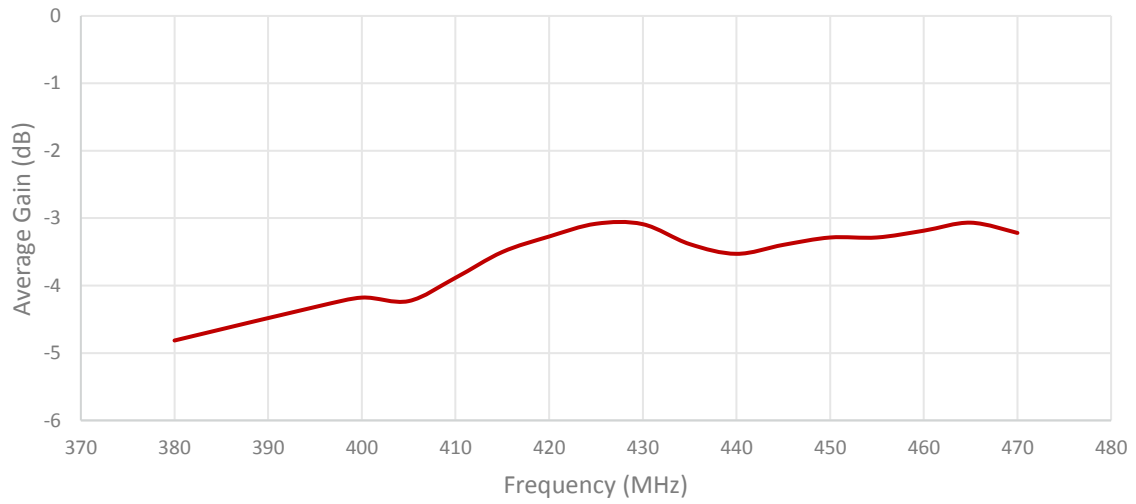
2. Mechanical and environmental specifications

Specifications	2J5410P
Mounting Type	Adhesive Mount
Dimensions (mm)	60 x 112.5 x 11.3
Radome	PC/ABS UV Stable
Radome color	Black, White
Operating Temperature (C)	-40 to +85
Storage Temperature (C)	-40 to +85
Substance Compliance	RoHS

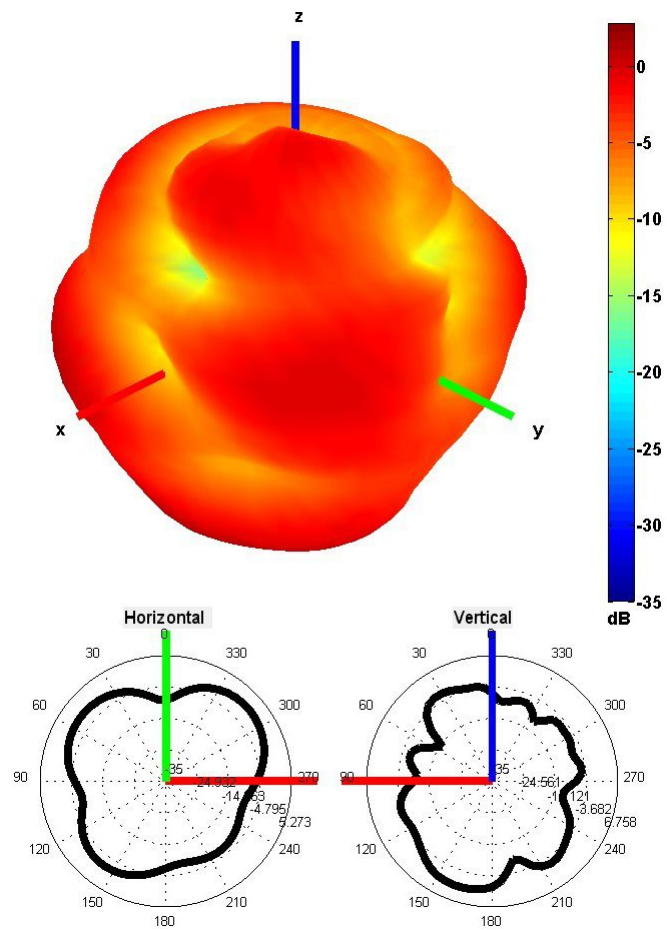
3. Antenna parameters





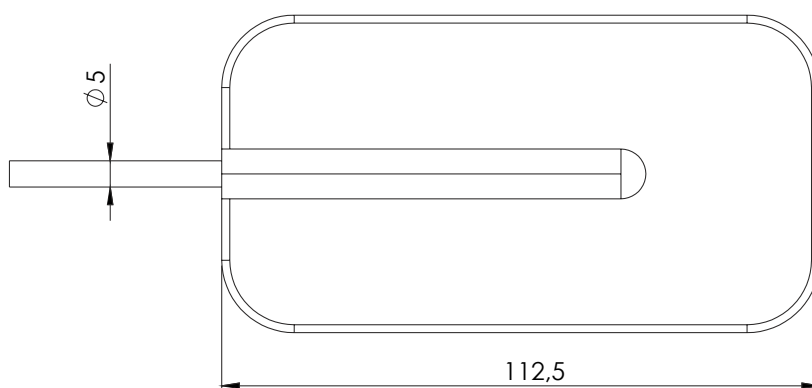
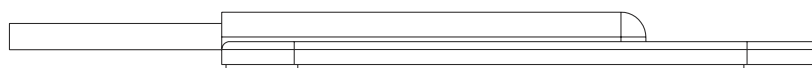
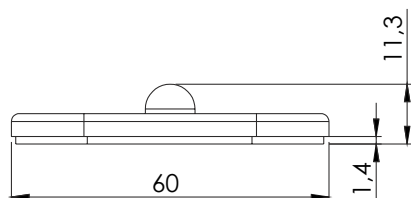


Radiation pattern reference



420 MHz Radiation pattern

4. Antenna drawings



5. Antenna Images

